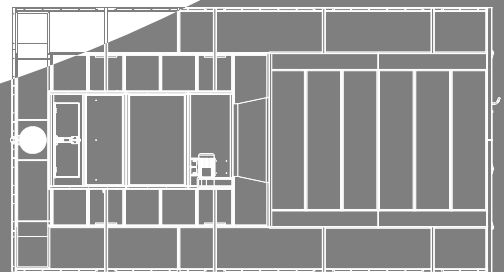
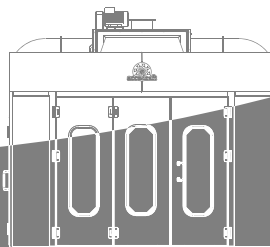




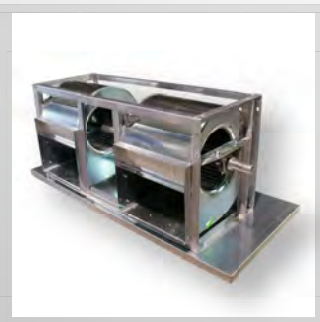
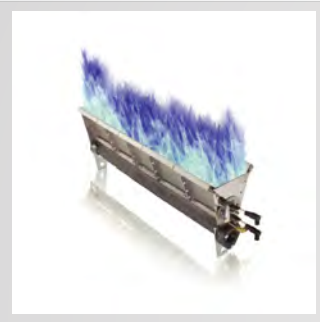
SS™ High Performance Space Saver

The Accudraft™ SS is a space saving high performance paint booth that allows the user to spray, flash, cure, and cool down in order to increase production. A small footprint and overhead air makeup unit save valuable shop space. Direct fire heating with heat recycle saves thousands in operating costs.



SAIMA of North America Inc. | Randolph, New Jersey 07869 | (800) 524-0340

info@accudraftpaintbooths.com | www.accudraftpaintbooths.com



Workspace

Starting Dimensions

- Interior 25' 8" long x 13' wide x 9' high
- Exterior 26' 1/2" long x 13' 4 1/4" wide x 13' high

Available Configurations

- Semi-Down
- Semi-Down Reverse Flow

Construction

- Dual Skin
- ElectroGalvanized Steel Walls
- Blue, White, Red or Grey Vinyl Coated Exterior
- UltraWhite™ Vinyl Coated Interior
- Tools-Free Ceiling Filter Changes

Main Doors

- Opening: 9' wide x 8'11" high
- Dual Skin Insulated Vinyl Coated
- Integrated Locking Mechanism
- Wire-mesh Reinforced Windows
- Welded Steel Reinforcement Frame

Service Door

- Side Access Door with Window
- 36" wide x 82 1/2" high

Filtration

- Pre Filter
 - Cleans Incoming Air
- Ceiling Filters (5 micron)
 - Down to 1/25,000 of an inch
- Exhaust Filter
 - Paint Arrestor (Over 98% Removal Efficiency)

Lighting

- 48" Daylight Corrected Light Fixtures
- Inside Access Hinged Glass Doors
- Lab Certified Explosion Proof

Options

- Length Extensions, Width Extensions, Height Extensions, Drive Through, Fourth Main Door, Single Phase

Intake

- Space Saver AMU
- 10,000 CFM
- ADH Double Forward Curve Blower
- 7.5 HP 3 Phase High Efficiency Motor
- 1,200,000 BTU (Capable)
- 98% Efficient Direct Fire Gas or Propane Burner
- 30:1 Turn Down for Accurate Temperature
- Full Recirculation on Bake - 80%
- 2 Stage Recirculation Filtration
- Intake/Exhaust Pressure Balanced

Exhaust

- 10,000 CFM
- Tube-Axial Exhaust Fan
- 5 HP 3 Phase High Efficiency Motor
- Non Sparking

SmartPad™ PLC Control Panel

- Softstart on Exhaust Motor
- Intellcure™ Fast Temperature Rise
- Automatic Pressure Control
- Exhaust VFD Included

Certification

- ETL Listed



Warranty

- 1 Year Bumper to Bumper

Note

- SAIMA of North America reserves the right to modify or change any of the dimensions or features without notification.

